

Taiheiyo Cement

Who We Are

We were the first private company in Japan to produce cement. It began with the production of one tonne of cement and the mission to

"build the nation using cement".

1881

Onoda Cement Co., Ltd.

1883

Asano Cement Co., Ltd.

1923

Chichibu Cement Co., Ltd.

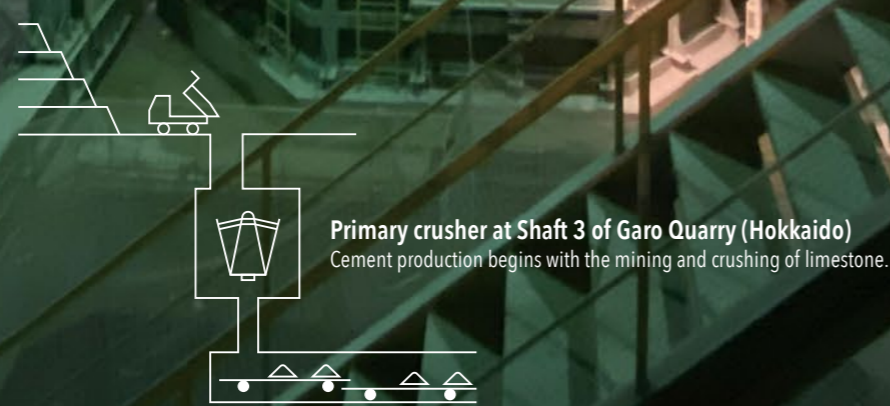
1947

Nihon Cement Co., Ltd.

1994

Chichibu Onoda Cement Corporation

1998



Mission of the Taiheiyo Cement Group

Our mission is to contribute to social infrastructure development by providing solutions that are environmentally efficient, enhance our competitive position and bring value to our stakeholders.



- We are committed to maximizing our corporate value by generating synergies among Taiheiyo Cement Group companies.
- We aim to manage the environmental impact of our operations while supporting the development of a recycling-based society.
- We will act in an ethical manner and abide by the laws and regulations of those countries in which we operate.
- We will openly communicate with our stakeholders and proactively report on our business activities in a transparent manner.
- We are committed to the ongoing development and application of innovative technologies in order to provide products and services that benefit our customers and society.
- We are committed to maintaining an international outlook and conducting our business in accordance with global standards.
- We will strive to anticipate the changing business environment to assess new opportunities for growth.
- We are committed to achieving our full potential through training and self-development.
- We are devoted to providing a safe and healthy working environment where our employees are valued and the human rights of all individuals involved in our business are respected.

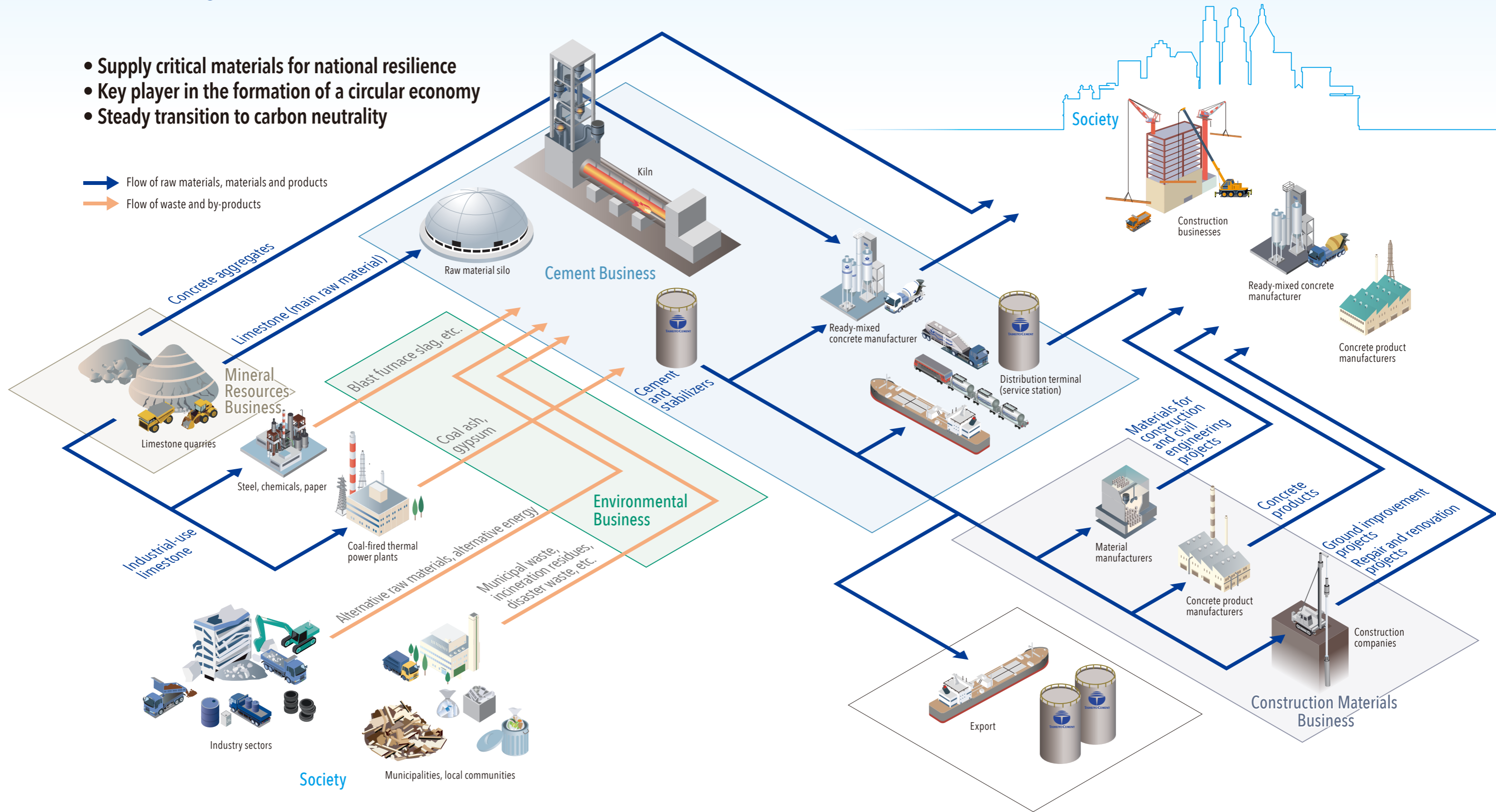
Taiheiyō Cement – Who We Are

Business Model

The Taiheiyō Cement Group contributes to building safe and secure social infrastructure.

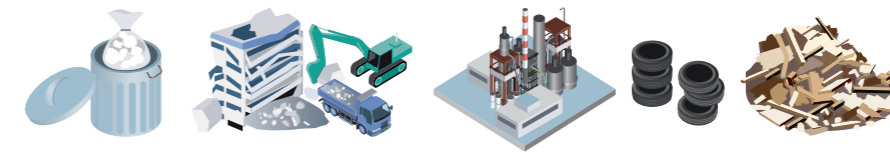
- Supply critical materials for national resilience
- Key player in the formation of a circular economy
- Steady transition to carbon neutrality

➔ Flow of raw materials, materials and products
➔ Flow of waste and by-products



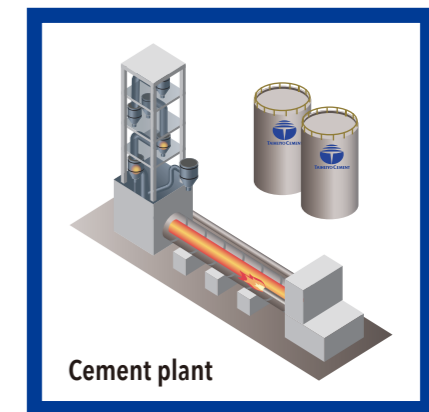
The Taiheiyo Cement Group will continue to fulfill its role as a supplier of critical materials for national resilience and as a key player in the formation of a circular economy, while progressing with the steady transition to carbon neutrality.

Key player in the formation of a circular economy

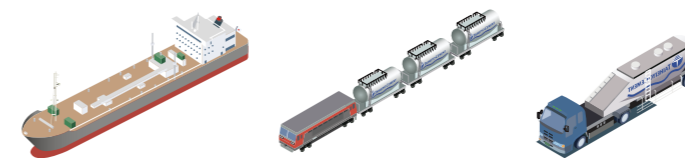


- Utilization of waste and by-products**
- Coal ash
 - Blast furnace slag
 - Various industrial waste
 - Construction soil
 - Municipal waste
 - Incineration residues
 - Household water and sewage sludge etc.

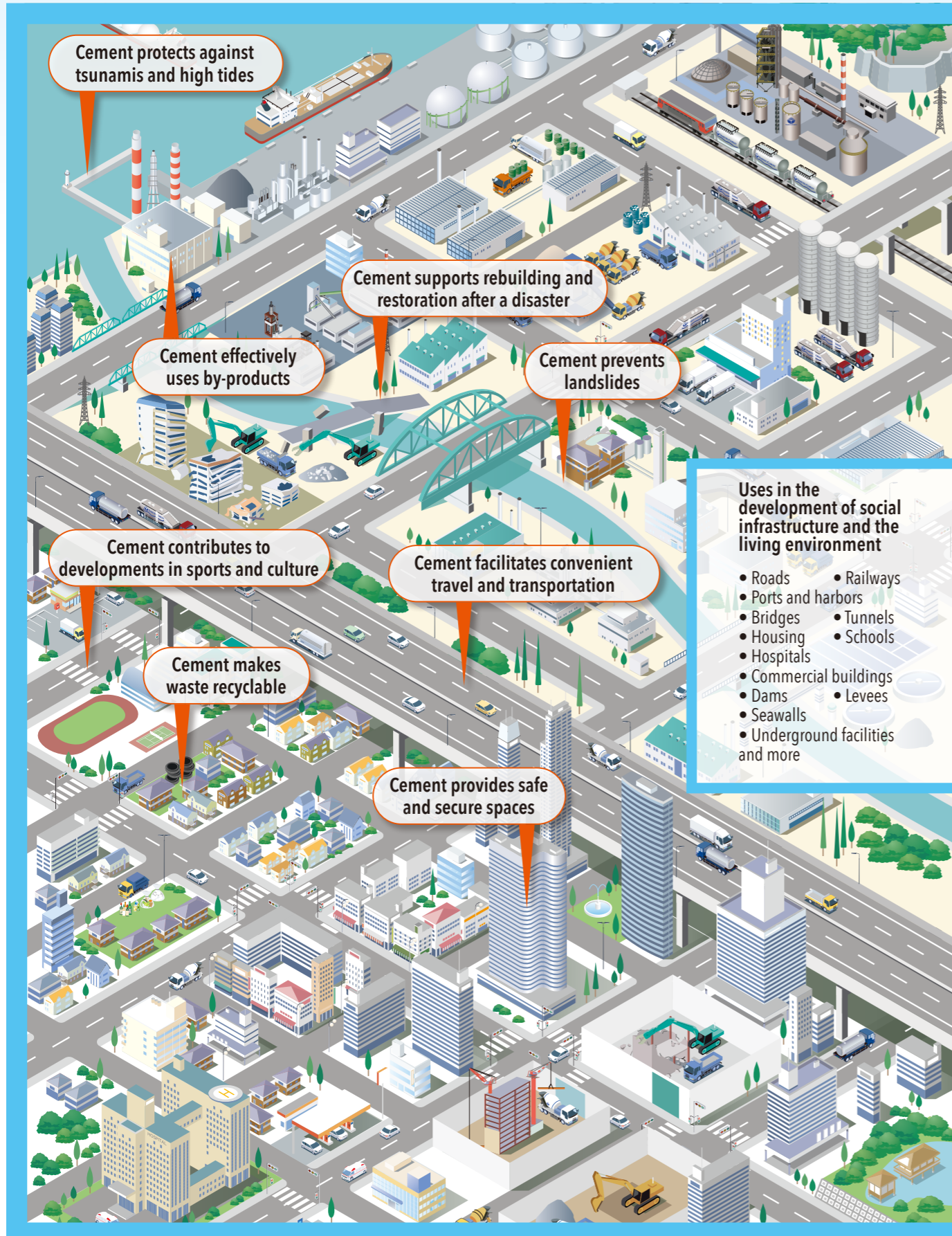
Steady Transition to Carbon Neutrality



- Supply of materials and products**
- By truck
 - By rail
 - By sea etc.



Supply critical materials for national resilience



Uses in the development of social infrastructure and the living environment

- Roads
- Ports and harbors
- Bridges
- Housing
- Hospitals
- Commercial buildings
- Dams
- Seawalls
- Underground facilities and more
- Railways
- Tunnels
- Schools
- Levees

Taiheiyō Cement – Who We Are

Global Network of Taiheiyō Cement Group

The Taiheiyō Cement Group operates production and logistics sites in Japan and overseas, and establishes systems to ensure stable supplies of cement and mineral products. In addition, our cement production process deploys world-leading technologies for the use of alternative raw materials and fuels to contribute to the formation of a circular economy and countermeasures to mitigate climate change.



CalPortland Company, Redding Plant (Redding, USA) | CalPortland Company, Mojave Plant (Mojave, USA) | CalPortland Company, Oro Grande Plant (Oro Grande, USA) | CalPortland Company, Rillito Plant (Rillito, USA)

Taiheiyō Cement Group Profile	
Net sales	Consolidated: 809.54 billion yen Non-consolidated: 309.4 billion yen
Employees	Consolidated: 12,720 Non-consolidated: 1,841 (not including seconded staff)
Subsidiaries	184 (including 111 consolidated subsidiaries and 5 equity-method subsidiaries)
Affiliates	104 (including 38 equity-method affiliates)

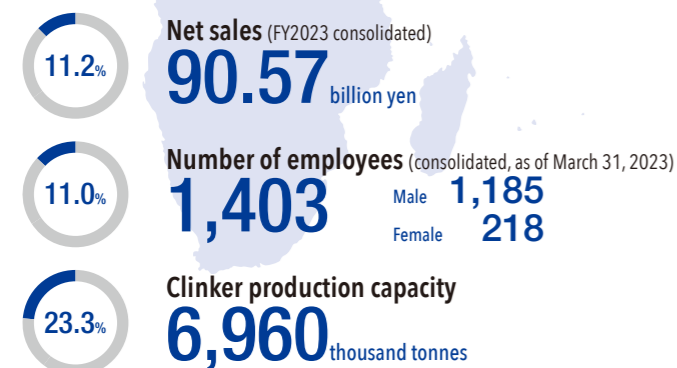
- Holding company
- ◆ Cement plant
- ◇ Clinker grinding plant
- ▲ Representative office
- △ Distribution terminal

TAIHEIYO CEMENT (CHINA) INVESTMENT

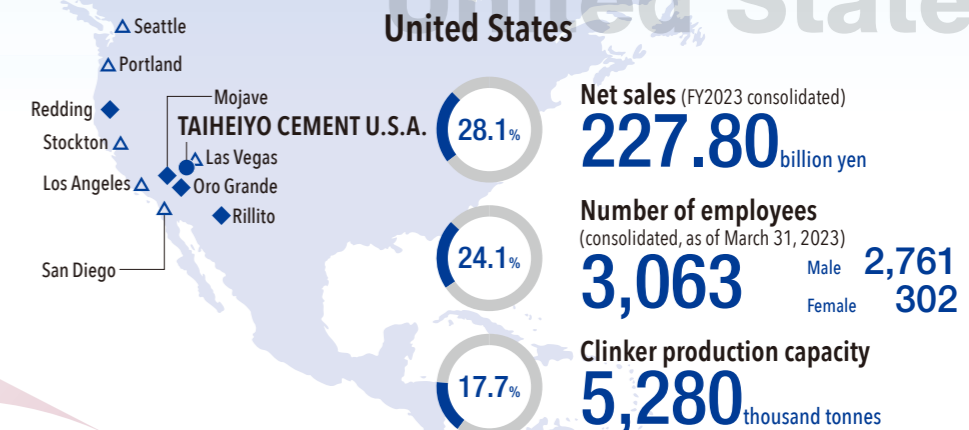


TAIHEIYO SINGAPORE

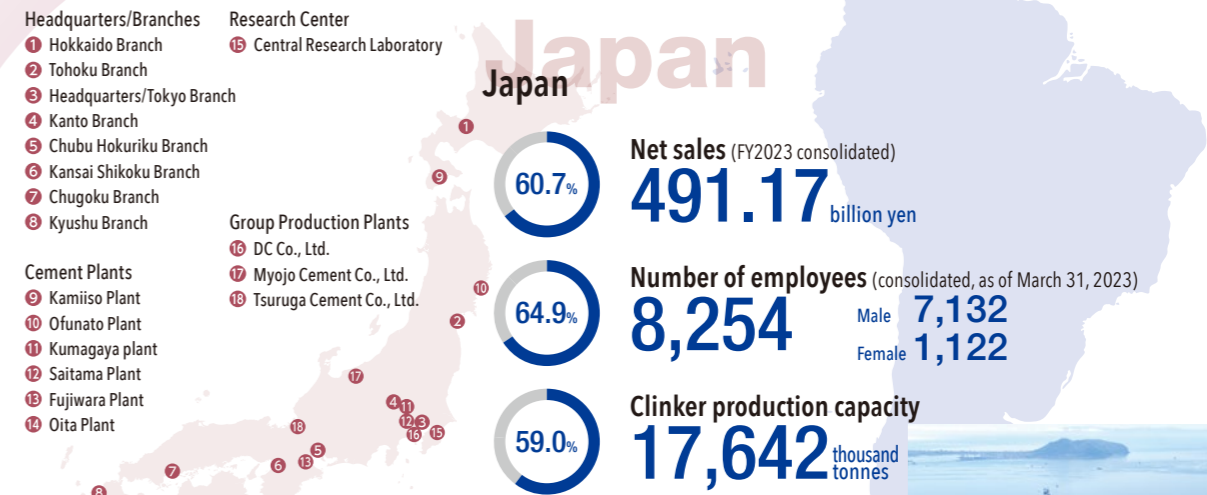
Asia / Pacific



United States



Japan



Dalian Onoda Cement Co., Ltd. (Dalian, China) | Jiangnan-Onoda Cement Co., Ltd. (Nanjing, China)

* Dalian Onoda Cement Co., Ltd. and Jiangnan-Onoda Cement Co., Ltd. ceased operations in December 2022 and February 2023, respectively.



Nghi Son Cement Corporation (Nghi Son, Vietnam) | Taiheiyō Cement Philippines, Inc. (Cebu, Philippines) | PNG-Taiheiyō Cement Limited (Lae, Papua New Guinea)



Taiheiyō Cement Corporation Ofunato Plant | Taiheiyō Cement Corporation Kumagaya Plant | Taiheiyō Cement Corporation Saitama Plant | Taiheiyō Cement Corporation Fujiwara Plant



Taiheiyō Cement Corporation Oita Plant | DC Co., Ltd. | Myojo Cement Co., Ltd. | Tsuruga Cement Co., Ltd.